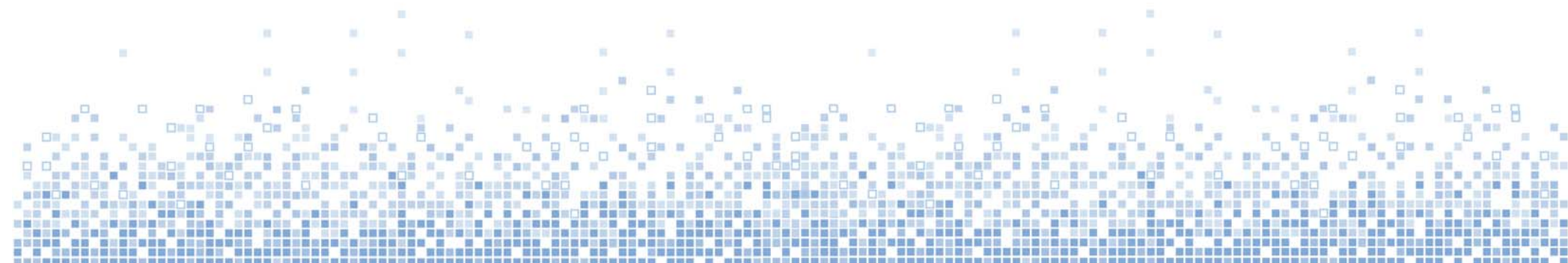
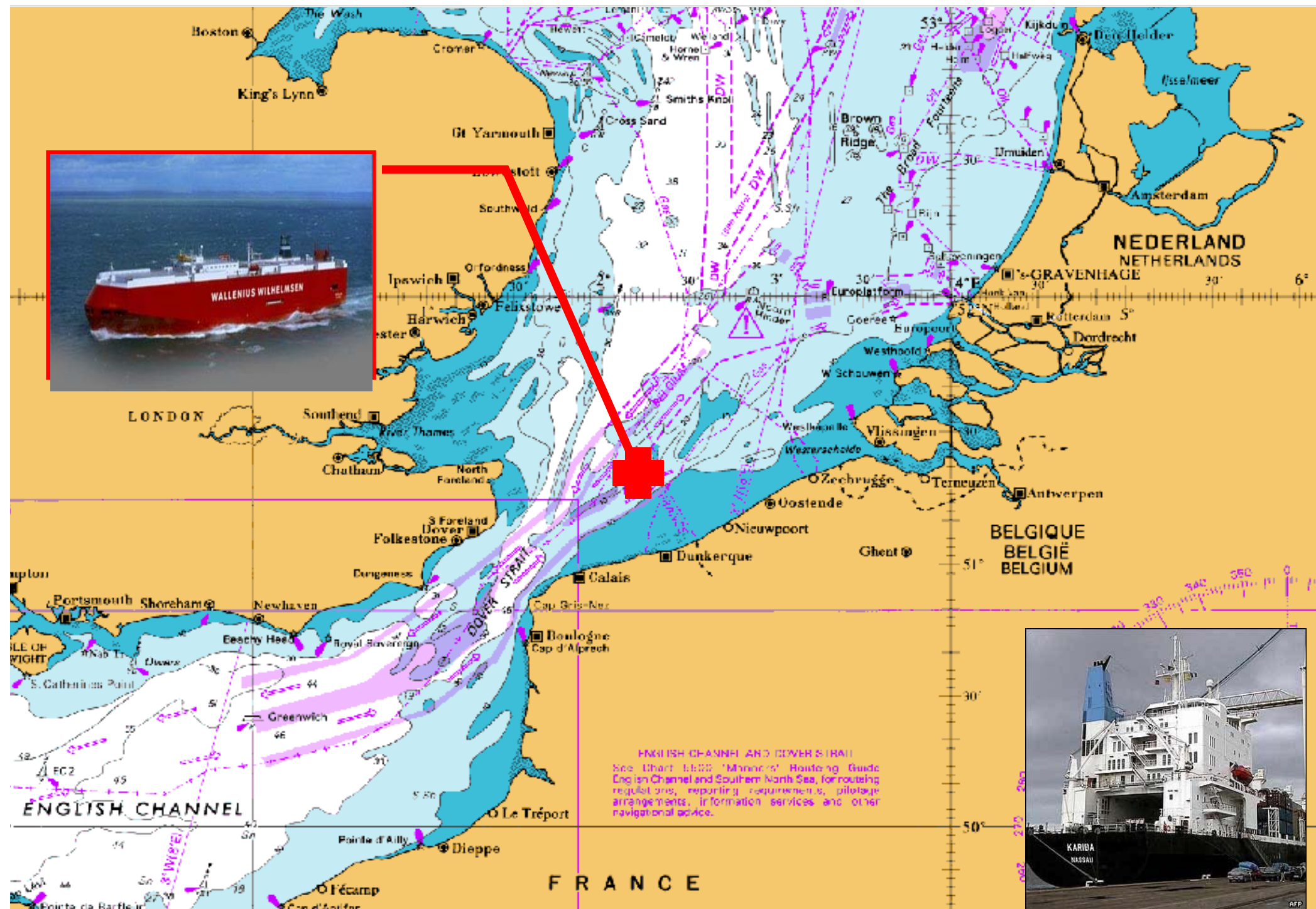


ILA Safety Panel Presentation – Some Examples

Sally Basker, General Lighthouse Authorities, UK

ILA Conference, Groton Ct, 25 October 2006



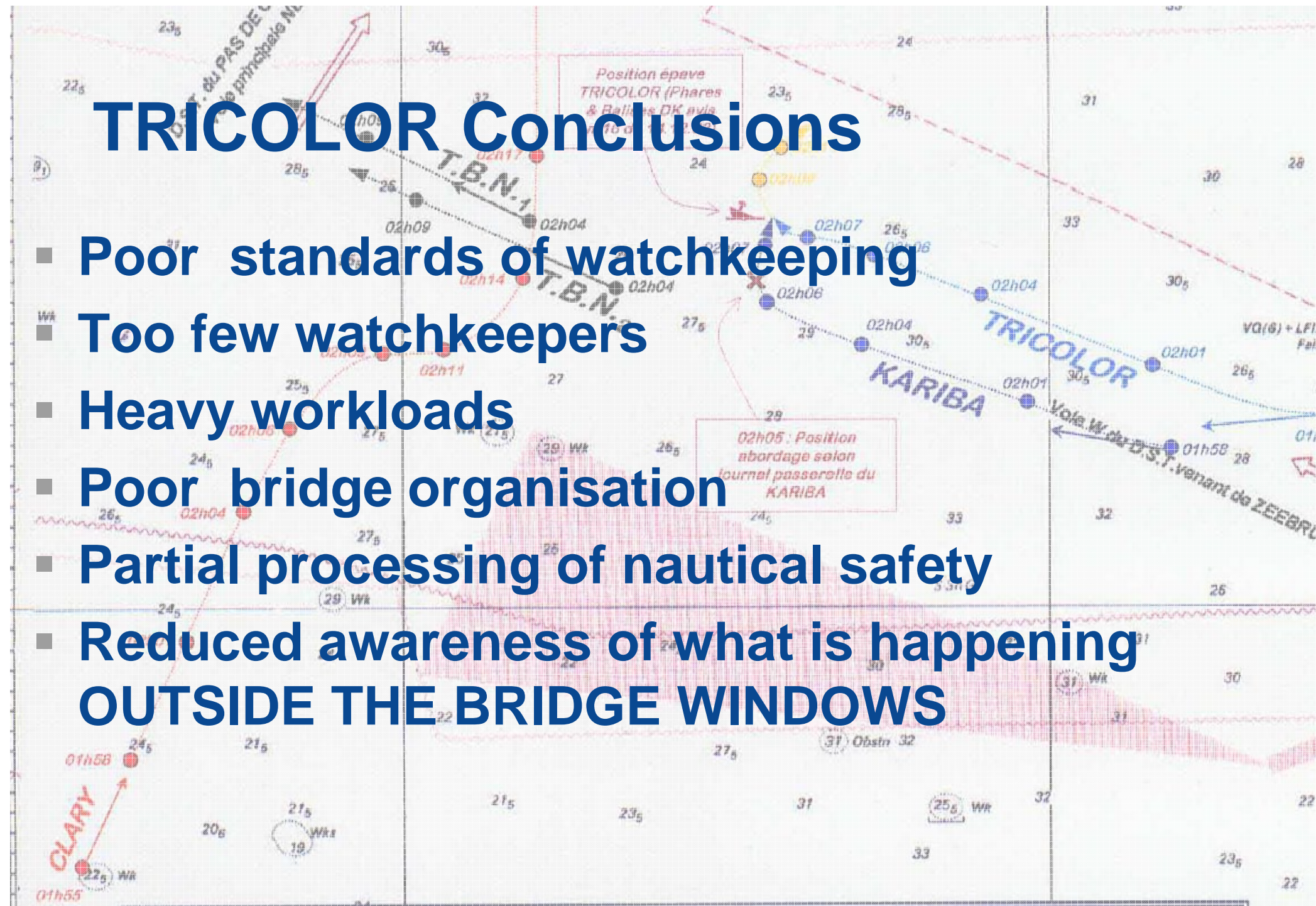


ENGLISH CHANNEL AND DOVER STRAIT
See Chart 1:500 "Mariners' Routing Guide
English Channel and Southern North Sea, for routing
regulations, reporting requirements, pilotage
arrangements, information services and other
navigation advice.



TRICOLOR Conclusions

- Poor standards of watchkeeping
- Too few watchkeepers
- Heavy workloads
- Poor bridge organisation
- Partial processing of nautical safety
- Reduced awareness of what is happening
OUTSIDE THE BRIDGE WINDOWS



የግንባታ ስራዎች ለግንባታ ስራዎች ለግንባታ ስራዎች

ግንባታ ስራዎች ለግንባታ ስራዎች ለግንባታ ስራዎች













Honey, I've sunk the boat!

- City stockbroker with new £250k yacht
 - 47 foot Wellworthy
 - Two weeks old
- Goes below leaving partner at the helm
- Minutes later strikes rocks
 - Takes on water through large hole
 - Made from glass fibre and so broke up into tiny pieces
- Trinity House has a lighthouse at Anvil Point!

